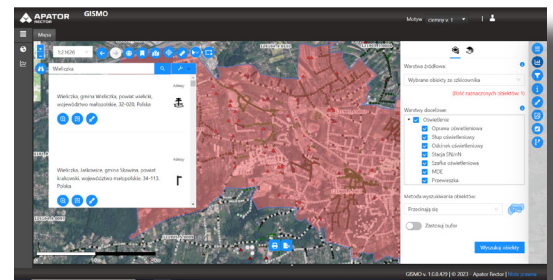
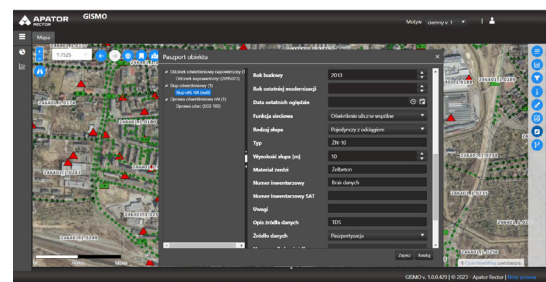


# Management based on current data

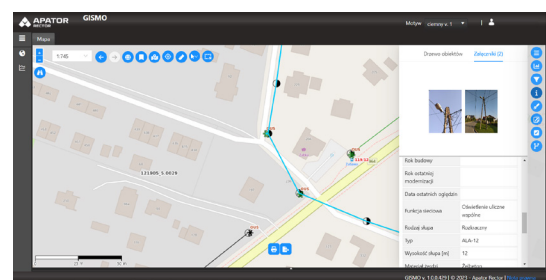
## GISMO System

GISMO - Geographic Information System (GIS) for Managing Objects is an app for management of the facilities that are a part of the distributed assets. GISMO is a safe cloud app on the Microsoft Azure platform. It is also possible to implement the app on your own computers - it is an on-premise version. This app is built on multiple proprietary functions based on commercially available GIS solutions, which help to manage the assets and analyze the existing infrastructure.



### Key functions

- Management of layer list displayed on the map
- Management of selected facility list
- Addition of external servers and files
- Data export
- Generation of prints and series printouts
- Making measurements on the map
- Multiple options for searching and filtering of facilities
- Displaying of descriptive data in the form of facility passport window
- Space analysis
- Reports



## Advantages of the GISMO App

- Ability to optimize costs in the organization through quick access to the gathered data
- Support for decision-making processes that require the data concerning the localization, e.g. selection of land for the investment, spatial development
- Readable representation of issues on the map that could be misunderstood in any other form
- Convenient form of communication between many stakeholders within the organization and externally, e.g. with the clients

## GISMO System for lighting

- Helpful tool for planning of new lighting investments, including current assets as well as network extension and planned upgrades
- Support for operation processes, e.g. lighting repair due to malfunction (adjusting the tools and parts for repair based on the gathered data)
- Ability to perform multiple simulations (depending on the industry) and generate reports
- Full, up-to-date and easily accessible data about the lighting infrastructure

## GISMO in the cloud

- No need to buy your own servers, software license, no additional costs of the investment
- Quick deployment of the solution
- Availability from every place
- No burden on your own human resources in terms of supervision of the data bases, servers or application
- Immediate access to the latest version of the GISMO System without any additional costs
- Very high level of data security. Usage of Microsoft Azure provides safe storage and processing of data that fulfill strict access policy standards, including multi-factor authentication and multi-level encryption. Microsoft employed the very first international standard of confidentiality in the cloud (ISO/IEC 27018) that provides full control of the data.

## Logging in and user management

GISMO System allows to flexibly manage the users and grant them rights for operation of the system so that the group of users, which has access to the data concerning the network assets, can be independently modified.

The program allows to:

- Create, delete, block and modify users of the system
- Create and reset the passwords to the system
- Create pre-defined roles for the users based on their rights in the GISMO App
- Assign roles to the users