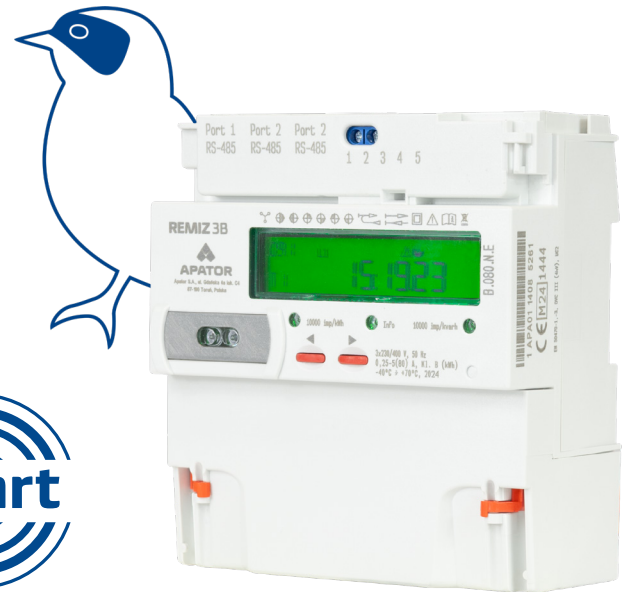


Three-phase TH35 rail electricity meter

REMIZ 3

Application

Three-phase multi-tariff electricity meter for DIN rail mounting (TH35-7.5 according to DIN 60715) designed for bidirectional measurement of active, reactive, and apparent energy in three-phase, four-wire low, medium, and high voltage electrical networks. Available in three connection versions: direct (REMIZ 3B), CT (REMIZ 3PP), and CT/VT (REMIZ 3P). Can be used with or without terminal covers and is suitable for installation in switchboards. The compact design of 6 DIN modules (width: 107 mm) allows a wide range of applications in confined spaces.



Features

- Bidirectional active energy measurement
- Four-quadrant reactive energy measurement
- Bidirectional apparent energy measurement
- Measurement of instantaneous values of energies, powers, currents, voltages, frequencies, power factors, and phase angles
- Measurement of maximum, cumulative, and excess power
- Harmonics measurement
- REMIZ 3B – 80 A maximum current
- REMIZ 3PP, 3P – 10 A maximum current
- LED indicators for active and reactive energy
- RGB LED for alarms and event signaling
- 9-digit backlit LCD with symbols, units, and OBIS codes
- Buttons for scrolling through the display values
- Error and event log registers
- Extended profiles registration
- Integrated RTC supported by a super capacitor (120 h backup) for advanced tariff control
- Optical port with configurable protocols: DLMS, IEC-1107
- 2 independent RS-485 communication ports with configurable protocols: Modbus, DLMS, IEC-1107
- Relay output or tariff input (optional)
- Two programmable pulse outputs
- Internal Wi-Fi module (optional)
- Designed for mounting on DIN rail TH35-7.5 - in accordance with DIN 60715

— Did you know that... —



REMIZ is
a species of small migratory
bird known for its surprisingly
durable nests, which can last
for many years.

Basic technical parameters

Model	REMIZ 3B	REMIZ 3PP	REMIZ 3P
Method of measurement	direct	semi-direct	indirect
Measurement accuracy of active energy	A or B		B or C
Measurement accuracy of reactive energy		1 lub 2	
Rated voltage U_n	3 x 230/415 V or 240 V L1 L2 L3	3 x 230/415 V or 240 V L1 L2 L3	3 x 57/100 V
Reference current I_{ref}	5 A		1 A oder 5 A
Maximum current I_{max}	80 A		10 A
Current I_{tr}	0,5 A		0,05 A
Minimum Current I_{min}	0,25 A		0,01 A
Starting Current I_{st}	0,02 A		0,001 A
Frequency		50 Hz	
Operating temperature		-25 do +55°C or -40 do +70°C	
Storage temperature		-40°C to +85°C	
Humidity		95% max (non-condensing)	
Environmental class		II, IP51	
Power consumption in voltage circuits / phase	< 0,6 W < 1 VA	< 0,4 W < 0,7 VA	0 W OVA (additional power supply)
Meter constant for active and reactive energy		2 500 or 5 000 or 10 000 or 20 000 imp/kWh/kvarh	
Mechanical class		M1 or M2	
Electromagnetic class		E2	
Communication Ports: Optical Port Port 1 RS-485 – connector RJ12 Port 2 RS-485 – duplicated, connector RJ12 Wi-Fi - IEEE802.11b/g/n (2,4 GHz)		IEC1107 DLMS/COSEM IEC1107 DLMS/COSEM, MODBUS RTU IEC1107 DLMS/COSEM, MODBUS RTU DHCP, TCP/IP, Access Point - IEC1107 DLMS/COSEM	
Display		Dedicated LCD 9 digits Field of view 12,8 x 62 mm	
Standards		EN 50470-3, EN 62056-21, EN 62052-11, EN 62053-24, DLMS/COSEM, WELMEC 7.2, WELMEC 11.1, EN 62053-23, EN 14908, EN 62052-31	
Standard configurations offered		REMIZ 3B, 080. N.D. B – direct, I_{max} 80 A, N – without terminal cover (optionally T – with cover); D – relay and pulse output REMIZ 3P, 010. N.D. B - indirect, I_{max} 10 A, N - without terminal cover (optionally T – with cover); D – relay and pulse output REMIZ 3PP, 010. N.D. B - semi-direct, I_{max} 10 A, N - without terminal cover (optionally T – with cover); D – relay and pulse output	

