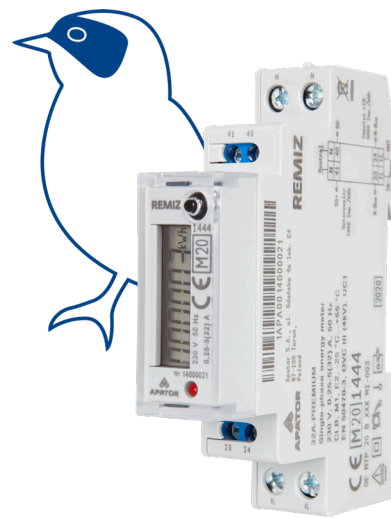


# Single-phase TH35 rail electricity meter

## REMIZ 1

### Application

Single-phase, single-tariff DIN rail (TH35-7.5 accord. to DIN 60715) electricity meter dedicated for measurement of imported active energy (A+) on LV single-phase, two-wire electrical networks. The compact, single DIN slot design (width: 18 mm) allows for a wide range of applications where space is limited.



### Features

- Measurement of imported active energy (A+)
- Measurement of instantaneous values of power, current, voltage, frequency, and power factor
- Maximum current 32 A
- SO output (according to DIN 43864)
- Test LED on the front of the meter
- Wired M-BUS interface according to DIN EN 13757-2,-3. (Premium version)
- 6-digit LCD
- Pushbutton for display scrolling (Premium version)
- Display lighting (Premium Version)
- Error status register
- Firmware identification on the LCD
- Designed for mounting on DIN rails, TH35-7.5 accord. to DIN 60715

— Did you know that... —



**REMIZ** is  
a species of small migratory  
bird known for its surprisingly  
durable nests, which can last  
for many years.

## Key Technical Parameters

Model	REMIZ 1
Connection method	Direct
Rated voltage $U_n$	230 V
Reference current $I_{ref}$	5 A
Maximum current $I_{max}$	32 A
Accuracy class for active energy	B
Insulation	4 (AC 50 Hz), 6 or 8 - optional (surges 1,2/50 $\mu$ s) kV
Meter constant	5 000 LED [imp/kWh] 1 000 SO [imp/kvarh]
Communication	Remote reading via bidirectional wired M-BUS interface, EN 13757-2,-3 (Compatible extension of EN 1434-3:1997) 300...9600 baud
Outputs	50 pulse output (according to DIN 43864) Max. 27 V DC, 27 mA (passive)
Display	6-digit segment display, in 5/1 format (5 integer digits, 1 decimal digit), automatic or manual scrolling of measurement data
Operating temperature	-25°C to +55°C
Storage temperature	-40°C to +70°C
Housing	II protection class
Ingress protection rating	IP20
Weight	67,5 g
Standards	EN 50470-1 EN 50470-3 EN 62052-11 EN 62052-31

