

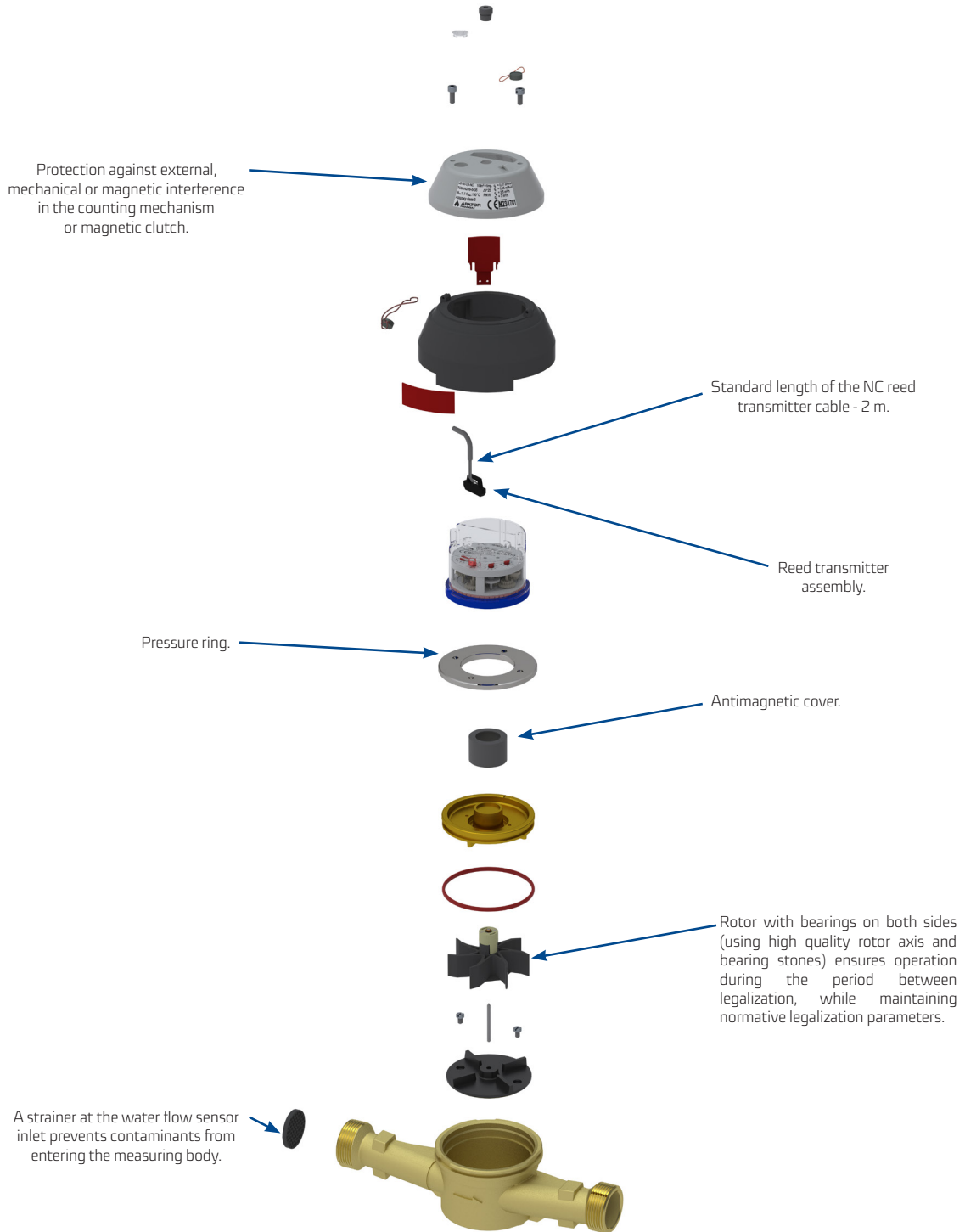


JS130-NC

Vane-wheel single-jet water flow sensor for heat meters DN25, DN32, DN40

JS130-NC

JS130-NC is a single-jet, dry-running water flow sensor dedicated to precise measurement of the flow of hot heating water. Using modern design and technological solutions, it ensures the reliability of indications and the stability of metrological parameters in permissible working positions during operation.



Application

Mechanical single-jet water flow sensors type JS130-NC are designed to work with heat meters. They can measure water at a temperature from 0.1°C to 130°C in a closed installation, with a maximum working pressure of up to 16 bar (PN16). Installation in horizontal pipelines with a counter on the top (H) or on the side (V) and vertical pipelines with a counter on the side (V), in heating installations of multi-family houses, in public and industrial buildings. The water flow sensors are equipped with a pulse reed transmitter (NC) and are available with a five-barrel counter (IP65), with antimagnetic protection and with a brass body. All materials used to produce the JS130-NC water flow sensor have appropriate Hygienic Certificates allowing the product to come into contact with drinking water.

Advantages:

Safety:

- Protection against:
 - interference with a magnetic field (antimagnetic screens),
 - mechanical interference (counter cover).

Comfort of use:

- JS130-NC water flow sensors work perfectly with various types of heat meter converters,
- easy to assemble in installation,
- modular structure,
- proven and solid design,
- high operational durability.

Special features:

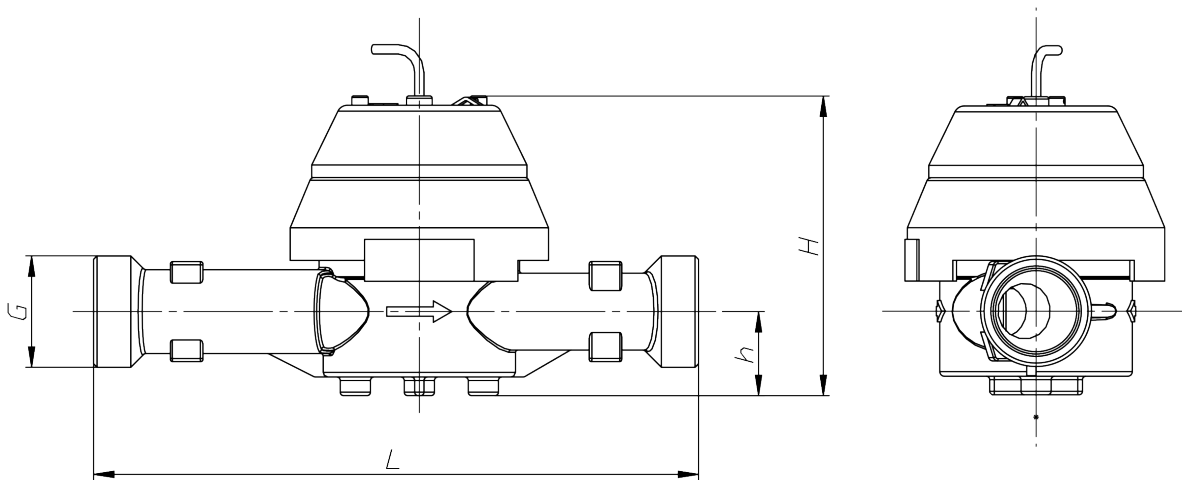
- wide measurement range,
- pointer-barrel counter placed in a hermetic cover,
- convenient reading by freely positioning the rotating counter.

Conformity with standards and regulations:

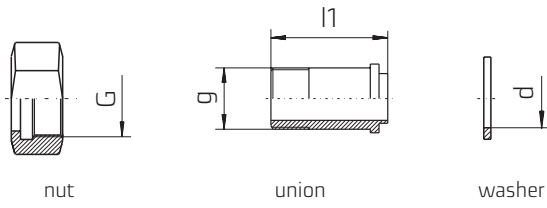
- EN 1434:2015
- OIML R 75:2002 and OIML R 75:2006 Heat meters Part 1-3
- Classification of environmental conditions - class A - according to EN-1434-1:2015, p. 10.2
- Classification of mechanical environmental conditions - class M1 - according to EN 1434-1:2015, p. 10.5
- Pulse output device class - OA class "OFF" - according to EN 1434-2:2015, p. 8.2.3
- Power supply for the reed transmitter (U_{max} / I_{max}) according to EN 1434-2:2015, p. 8.2.4

Table 1. Specifications

Type			JS130-3,5-NC	JS130-6-NC	JS130-6-G 11/4-NC	JS130-10-NC
Nominal diameter	DN	mm	25	25/32		40
Minimum flow rate	q _i	H	70	120		200
		V	350	600		1000
Nominal flow rate	q _p	m ³ /h	3,5	6		10
Maximum flow rate	q _s	m ³ /h	7	12		20
Indicating range	-	m ³	10 ⁶			
Resolution of reading	V _e	dm ³	0.05			
Maximum pressure allowed	MAP	-	PN16			
Maximum working pressure allowed (PS)	-	bar	16			
Maximum pressure loss	q _p	(ΔP)	0.25			
Maximum temperature allowed	-	°C	130°C			
Minimum length of straight section before and after the flow sensor	-	mm	0			
Working position	-	-	H,V			
Maximum error allowed	E _f	%	±(3+0.05q _p /q) but no more than 5%			
NC reed pulse transmitter	-	dm ³ /imp	10 (standard pulsing); 1, 100 (on request)		100 (standard pulsing); 10, 1000 (on request)	
Height	H	mm	129			
	h	mm	24			
	L	mm	260		300	
Weight	-	kg	1,9	2.15/2.45		2.7



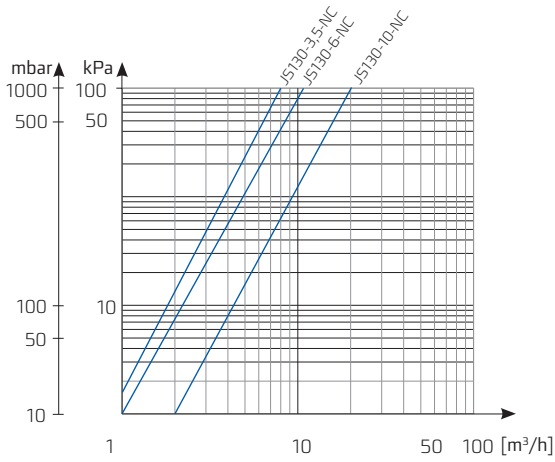
Connection fittings



DN	G	g	d	l1
25	1¼"	1"	29	46.5
32	1½"	1¼"	36	56
40	2"	1½"	43	66

Pressure loss chart

Pressure loss



The data presented in the datasheet was correct on the date of publication.
The manufacturer reserves the right to modify and improve its products without notice.
This publication is indicative only and should not be construed as a commercial offer under the Polish Civil Code.



Apator Powogaz S.A.

Jaryszki 1c, 62-023 Żerniki, Poland

Office: sekretariat.powogaz@apator.com, tel. +48 61 84 18 101

Sales / Customer Service: tel.: +48 61 84 18 149

Customer Service Centre Support: handel.powogaz@apator.com

Export: export.powogaz@apator.com

Technical Support: support.powogaz@apator.com, tel. +48 61 8418 131, 134, 294

Warranty Claims: reklamacje.powogaz@apator.com