



Measurements data collecting system

# KOLEKTOR

Analyzing measurement data is the basic need of distribution networks administrators. This need is satisfied by Kolektor System through gathering data from telemetric devices and collecting them in one database. This solution gives different opportunities of analyzing data.

## Data collecting

**Measurements data collecting system** gives possibility to collect, analyze, verify and process different parameters and different types of data (archival and current).

## Why KOLEKTOR?

The wide range of functionalities offered by the system, allow fast access to measurement data and facilitate analyzing, modifying and managing data. Kolektor is dedicated to gathering data for settlement of payments systems and delivering them to external systems (ex. SAP).

## Benefits:

- **Safety** – protection against losing data
- **Decreasing service settlement payments costs**
- **Shortening time** needed for analyzing data – generating reports
- **Management** – measuring and registration data collected in one place
- **Flexibility** – possibility of defining measuring variables visualized on charts
- **GSM communication** – SMS, GPRS, LTE, NB-IoT, LTE cat.M
- **User friendly interface** – easy navigation
- **Integration** through REST API or Webservice with other systems such as ERP

## Data collecting

System collects measuring data from convectors and recorders, which use different protocols (DLMS, Smart-Gas, Gaz-Modem 1/2/3). User has a wide range of possibilities of defining the way of presentation and analyzing data (reports, charts, export as .xls).

### Data aggregation

- 24 hours, weekly
- Time range individually defined by user



### Data export

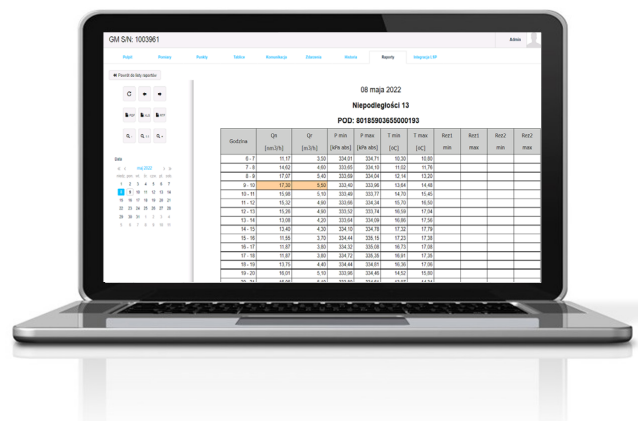
- Export measurement data and record data to .xls format
- Data sharing via Webservice and message queues



## Reports

Advanced reports system gives wide range of possibilities of analyzing data collected in defined time range. Depending on users' needs, report can be generated based on data collected for different variables in one measurement point or on data collected for devices. User friendly interface allow to tailor to the users' needs, by following functionalities:

- Searching for reports and sorting them
- Navigation between reports
- Changing view (zoom in, zoom out)
- Export to different format (.pdf, .xls, .rtf)
- Choosing time range for a report



# Data visualization

Measurement data are presented in Kolektor System in two different ways: as a chart and as a table. User can easily change views or in the same time switch both of them on. The table is correlated whit chart what makes data analyzing easy. Moreover, user has opportunity to decide which variables will be see on chart. Opportunity to customizing the view makes data analyzing and reading more comfortable for the user.

Measurement data

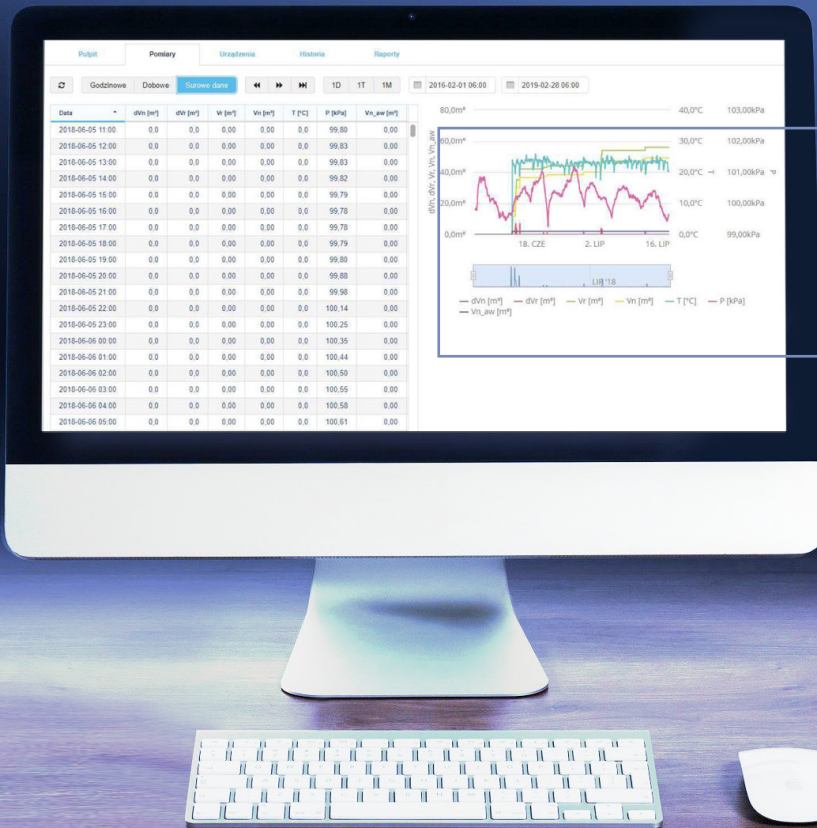


## Chart operations:

- Hiding measuring data series
- Zooming the chart
- Change the range of data
- Samples' timestamps
- Automatic data series scaling

## Ergonomics:

- Variables signified by colors
- Aggregation
- Filtering
- Export
- Changing view mode



## Telemetric devices

Kolektor System makes telemetric devices management easier. It allows for assembly, dismantling and changing devices on measurement points. Device's dashboard ensure quick access to 24-hours measurements data, basic parameters and reports. System informs user about all occurring incidents. Device control is easier due to the history of actions performed on the device and list of communication sessions with an access to logs from each session. Device's dashboard allows to integrate with Local Measuring Systems.



## Measurement points



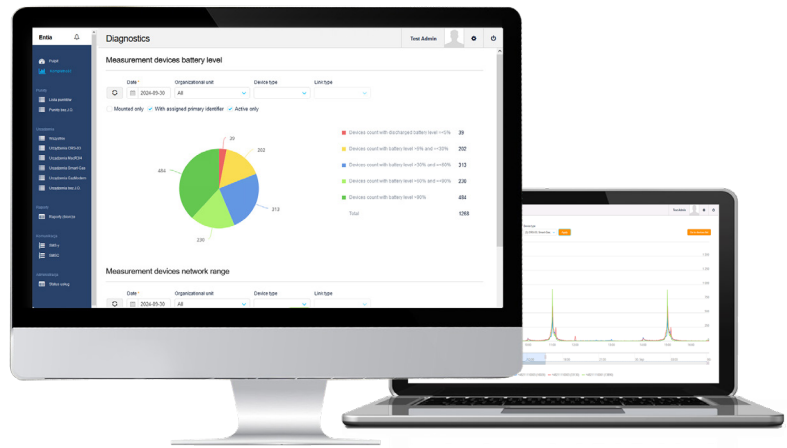
List of measurement points make navigation and adding new points easier for users. Measurement point's dashboard allows for quick access to 24-hours measurement data, basic information about that point and devices installed there. Finding localization of points is easy thanks to the map. From the level of dashboard of measurements point user can create reports and preview actions performed on that point.

## Business processes carried out

- Measurement points inventory
- Measurement data backup
- Sharing data for settlement payments
- Assembly, dismantle and change devices
- Data analyzing and reports

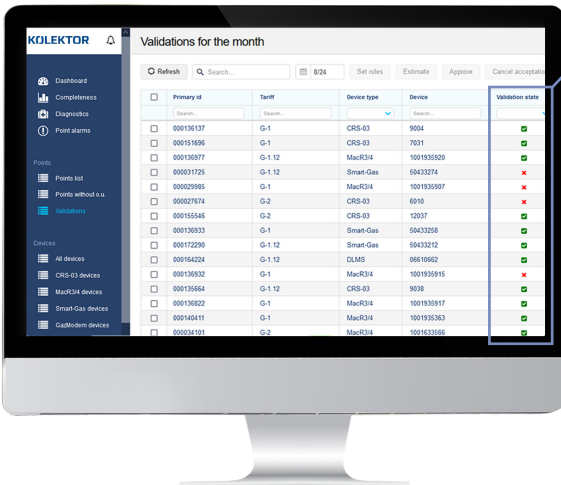
# Full diagnostics of system and devices status

Remote monitoring of device status and presentation statistics, i.e. battery consumption or GSM coverage strength are just some of the parameters analyzed by the system. Thanks to dedicated dashboards, the user focuses his attention on the most important cases and reacts in advance.



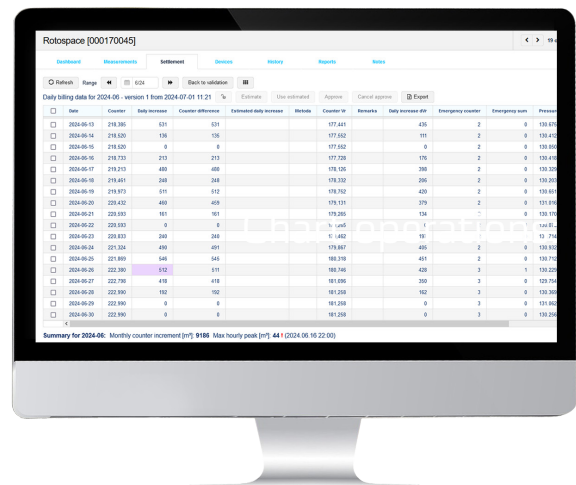
## Automatic data verification

The main component for managing the entire data verification process is the validation screen. On the screen of measurement points, after specifying the time range for which the data are to be verified and indicating the validation rules, the results are presented in the form of information about the correctness of the data.



## Corrections and preparing data for settlements

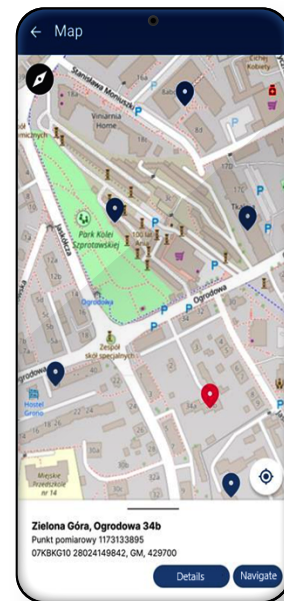
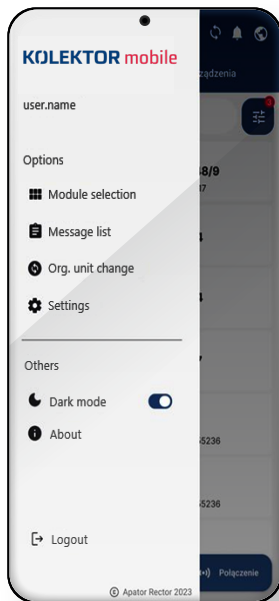
If data is missing or incorrect, the system allows you to enter data manually or correct it. If data is missing or incorrect, the system allows you to enter data manually or correct it. In this way, the completed and verified data can be approved and further used, for example, in the process of settlement with the recipient.



## Mobile application

A mobile application integrated into the system supports the work performed in the field:

- assembly, disassembly of devices on measurement points,
- downloading measurement data from devices, e.g. via Bluetooth,
- configuring devices,
- device diagnostics.

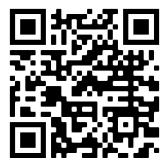


The data presented in the datasheet was correct on the date of publication.  
The manufacturer reserves the right to modify and improve its products without notice.  
This publication is indicative only and should not be construed as a commercial offer under the Polish Civil Code.



Apator Rector Sp. z o.o.  
ul. Wrocławska 17b  
65-427 Zielona Góra, Poland  
phone +48 607 688 871  
apator.rector@apator.com

Visit us and  
like us on FB



[www.apator.com](http://www.apator.com)